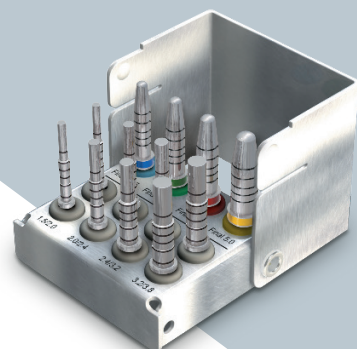
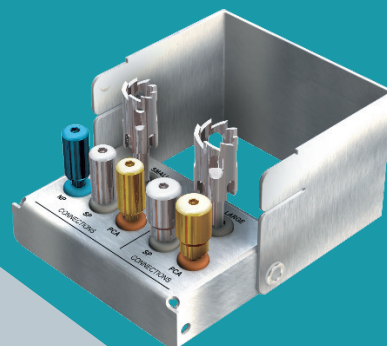
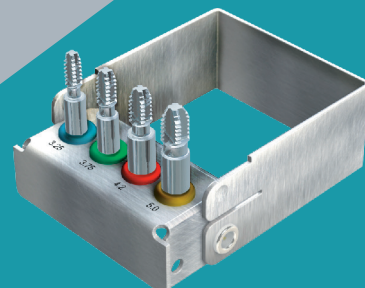
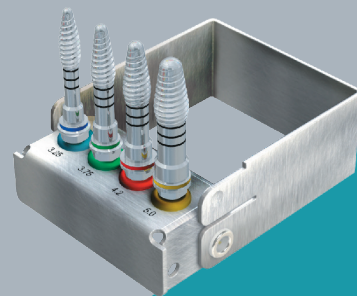


Where technology meets dentistry

**PALTOP**



# MINI SURGICAL KITS

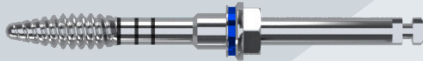



## BASIC OSTEOTOME KIT

CAT # 60-70119

The Osteotome kit is used to expand and compress bone in poor bone quality instead of following the conventional drilling protocol.

**The kit includes: 4 Osteotomes: 3.25, 3.75, 4.2 and 5.0.**



Osteotome for 3.25 Implant		60-70081	1
Osteotome for 3.75 Implant		60-70082	1
Osteotome for 4.2 Implant		60-70083	1
Osteotome for 5.0 Implant		60-70084	1





## BONE TAP KIT

CAT # 60-70118

Bone Tapping is done to create a more passive seating of the implant in dense bone.

**The kit includes: 4 Bone Taps: 3.25, 3.75, 4.2 and 5.0. These sizes cover the range of the Paltop Implant series: 3.25,3.75,4.2 and 5.0.**



Bone Tap for 3.25 Dia Implant		60-70056	1
Bone Tap for 3.75 Dia Implant		60-70057	1
Bone Tap for 4.2 Dia Implant		60-70058	1
Bone Tap for 5.0 Dia Implant		60-70059	1

# BONE PROFILER POST IMPLANT KIT

CAT # 60-70116



The Bone profiler kit is used to remove excess bone around the implant head and connection. It can be used at time of implant placement or at stage 2 uncovering.






The kit includes a pin that screws into the implant that precisely guides a trephine that removes the excess bone.

This pin also guides the vertical placement of the trephine and protect the implant connection.

**The kit includes: 2 trephine diameters: 5.0 and 6.0mm with matching pins for NP, SP and Conical connections.**



Bone Profiler Post Implant 5.0mm		60-70127	1
Bone Profiler Post Implant 6.0mm		60-70128	1

Bone Profiler Post Implant Pin 5.0mm NP		60-70129	1
Bone Profiler Post Implant Pin 5.0mm SP		60-70130	1
Bone Profiler Post Implant Pin 5.0mm PCA		60-70131	1
Bone Profiler Post Implant Pin 6.0mm SP		60-70132	1
Bone Profiler Post Implant Pin 6.0mm PCA		60-70133	1

## COUNTERSINK KIT

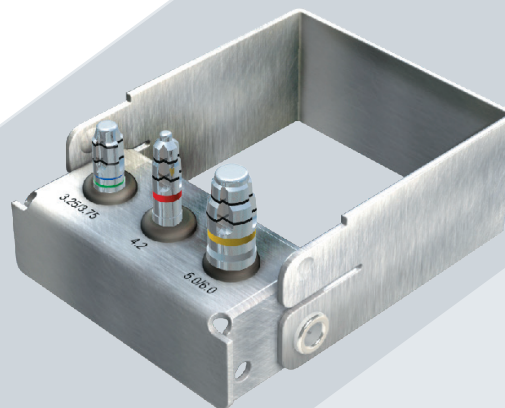
CAT # 60-70117

Countersinking is done to reduce excessive pressure (insertion torque) when fully seating the implant.

This kit simplifies the drilling sequence by eliminating the need to use the next size up final drill for countersinking.

Our new countersink kit is an excellent addition to our premium, basic and compact surgical kit.

**The kit includes: 3 countersinks: 3.25/3.75, 4.2, 5.0/6.0. These sizes cover the full range of Paltop implant series: 3.25,3.75,4.2,5.0,6.0.**



Countersink for 3.25mm & 3.75mm Implant		60-70145	1
Countersink for 4.2mm Implant		60-70144	1
Countersink for 5mm & 6mm Implant		60-70143	1





## DRILLING KIT FOR WIDE IMPLANTS

CAT # 60-70114

The Drilling Kit for Wide Implants is used to drill 6mm implants.

**The kit includes: 2 Step Drills: 4.3/3.8 and 4.3/5.3, a Long Final Drill for the 6mm Implant and a Countersink for the 5mm and 6mm Implants.**



4.3/3.8 Long Step Twist Drill		60-70121	1
4.3/5.3 Long Step Twist Drill		60-70123	1
Long Final Drill for Ø6mm Implant		60-70098	1
Countersink for Ø5mm & Ø6mm Implant		60-70143	1

# PARALLEL PINS KIT

CAT # 60-70115






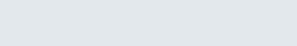


Final Depth Pins are intended to verify parallelism with multiple implant cases.

**The kit includes:**

**4 Final Depth Pins: 3.25,3.75,4.2,5.0**

**8 Stepped Depth Pins: 1.5/2.0,2.0/2.4,2.4/3.2,3.2/3.8.**



Final Depth Pin for 3.25 Implant		60-70085	1
Final Depth Pin for 3.75 Implant		60-70086	1
Final Depth Pin for 4.2 Implant		60-70087	1
Final Depth Pin for 5.0 Implant		60-70088	1
Stepped Depth Pin 1.5/2.0		60-70134	2
Stepped Depth Pin 2.0/2.4		60-70135	2
Stepped Depth Pin 2.4/3.2		60-70136	2
Stepped Depth Pin 3.2/3.8		60-70137	2